

NEW EXECUTIVE CONDO @ YISHUN

For enquiries, call:

Pemi: 9009 1172

Jag: 9488 4904

MASTER PLAN FOR NORTH REGION

Khoo Teck Puat Hospital @ Yishun



Master Plan 2008 for North Region

Natural Charms of Yishun



Sungei Buloh Wetland Reserve



**Rustic farmlands of
Lim Chu Kang**

**In the next 10 – 15
years....**

- **more green areas
at Lower Seletar
Reservoir**
- **more extensive
park connector
network to link up
all the green areas.**



Kranji Marshes



Central Catchment Nature Reserve

More Jobs Created

- **More commercial developments** will also create employment opportunities.
- **An additional 35ha of land near the Mandai Industrial Estate** has also been reserved for a large industrial park to be developed in the medium term.
- Industrial developments already in the works include the **Intel Micron Flash Technologies wafer fabrication plant** within the North Coast Wafer Fab Park at Admiralty Road West.
- **Seagate's third media manufacturing** facility in Singapore, Woodlands 3, is also under construction at the junction of Woodlands Ave 5 and 12. It is expected to be completed by 2009.
- **More job opportunities** in the North Coast Wafer Fabrication Park, at the fringes of Woodlands and Sembawang Towns, and in existing industrial estates



High-rise factory space at Woodlands Spectrum 2



Northlink in Sembawang



Intel Micron Flash Technologies wafer fabrication plant



Woodlands Wafer Fabrication Park



YS-ONE in Yishun, the first 7-storey ramp-up industrial development for light industries

More Jobs Created

Singapore's aerospace industry has soared to new heights with an average growth rate of 13 per cent since 1990. The industry employed some 19,000 people and contributed S\$6.9 billion in output in 2007. Fuelling the industry's growth, Seletar Aerospace Park will add new market segments such as narrow-body and smaller aircraft to Singapore's already strong MRO industry of commercial wide-body aircraft. By laying a strong foundation for Seletar Aerospace

Singapore will attract emerging companies looking for cost-competitive and reliable manufacturing locations to produce and assemble aerospace components.

Seletar Aerospace Park will host a wide range of activities, including:

- Manufacturing and assembly of aircraft engines, components and small aircrafts
- Maintenance, Repair & Overhaul of aircrafts & components
- Business & General Aviation
- Training and R&D

Companies at Seletar Aerospace Park benefit from synergies in this integrated environment that include economies-of-scale and increased efficiency. There is also significant scope for new industry collaborations— alliances brought about by the Park's shared infrastructure, and close proximity to suppliers, customers and partners within the tight-knit aerospace community



Seletar Aerospace Park

Strengthening Singapore's capabilities as an aerospace hub in Asia

Vision of Seletar Aerospace Park



A world-class, integrated aerospace community housed amidst an inspiring and unique environment

Recreation

- At Family Bay, exciting new facilities such as a water play area for children, water stage for performances, and radio control boating, will provide family fun.
- Rowers' Bay will be equipped with spectator galleries for rowing competitions, and will double as a serene picnic area at other times.
- In Woodlands, Admiralty Park offer recreational amenities (such as an amphitheatre, activity plaza, and fitness equipment) as well as ready access to forested areas and mangrove habitats. And all this within minutes of an MRT station. The 7ha "urban" component of the park has been opened since October 2007, while the remaining 20ha "nature" component will open by year's end.
- A neighbourhood park at Yishun Central is already undergoing improvement works. Two interim parks will be created in Yishun too, along Yishun Ave 1.



Recently-opened Admiralty Park



Family Bay and Rowers Bay at Lower Seletar Reservoir

Recreation

The 9km of park connectors existing in the North today will be extended to 90 km within 10 to 15 years, providing a seamless route for cycling and jogging between Sungei Buloh Wetland Reserve in Lim Chu Kang, Lower Seletar Reservoir in Yishun, and the Central Water Catchment area.

Along the way, the network will join up with various parks and waterbodies of the North, including Admiralty Park, Sembawang Park, and Yishun Park.



Simpang Kiri Park Connector



Proposed cycling tracks in Yishun



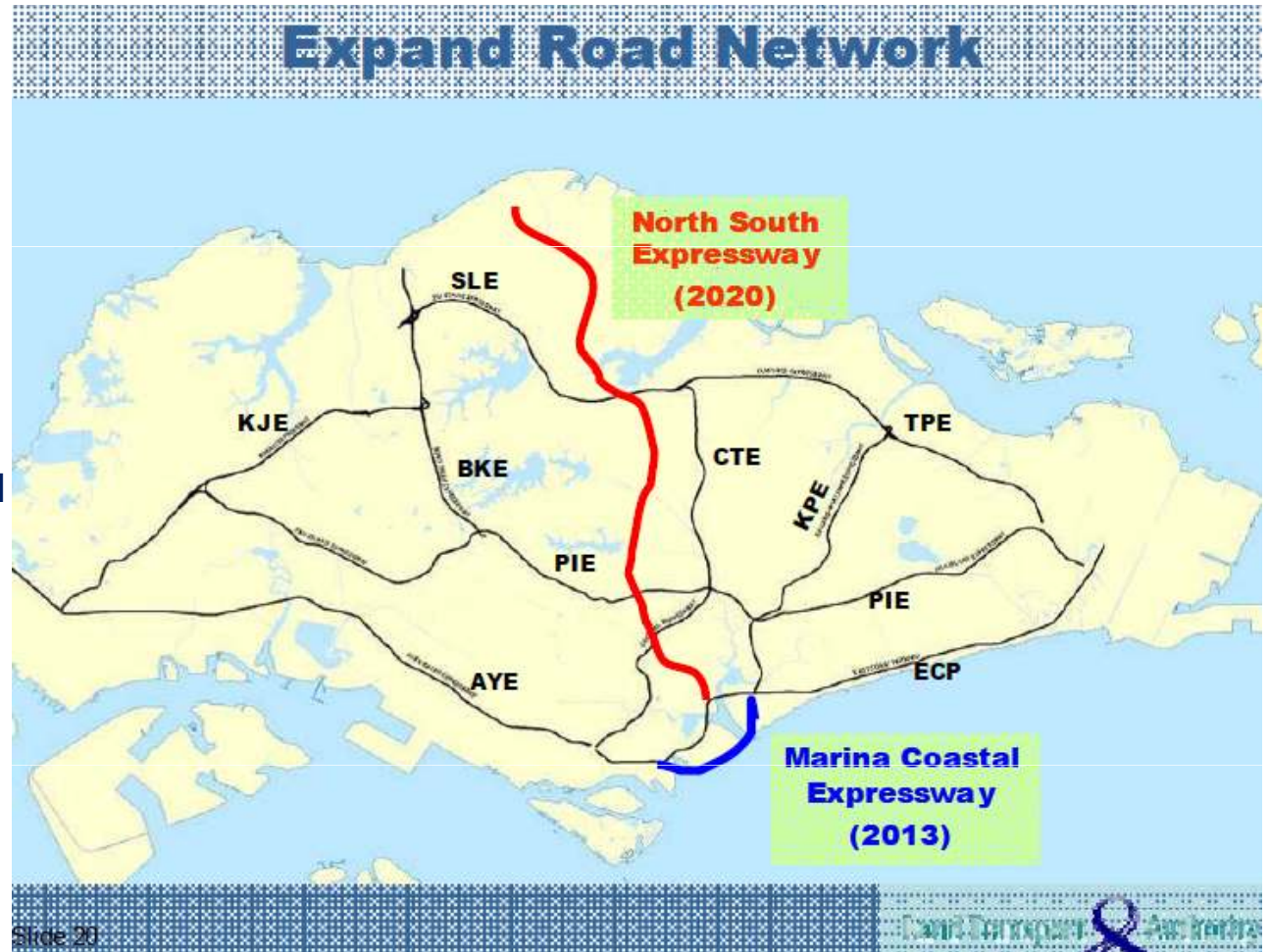
New park connectors to Lower Seletar Reservoir

Improved Accessibility

Quicker Road Trips

The 21km North-South Expressway (NSE) will similarly complement the CTE, providing additional capacity to serve the expected increase in travel demand along the north-south corridor. The NSE is expected to **cut travelling time to the city by 30 percent**.

A new road **connecting Yishun Ave 7 to the CTE and TPE is proposed**. It will provide residents of the North, especially Yishun, an alternative route to surrounding expressways.



A Rejuvenated Yishun



New community spaces at Yishun Town Centre

- New community spaces
- Improved pedestrian linkages
- Integrated mixed-use development with bus interchange at Yishun Central
- New park connectors will make it easier to get from nearby homes to Lower Seletar Reservoir, while the park around Yishun Pond will be enhanced for residents' enjoyment.



Enhanced park around Yishun pond, framed by Khoo Teck Puat Hospital and future institutional use

Newly-built Jelutung CC in Sembawang



Upcoming Yishun Community Centre

Increase Commercial Space



Causeway Point at the Woodlands Regional Centre

- New office and retail developments could spring up at the Woodlands Regional Centre (WRC) in the medium term. Besides increasing retail opportunities for residents of the North, the timely development of the WRC will also generate more jobs in the region
- The extension of Northpoint Shopping Centre will bring another 10,000sqm of commercial space to Yishun by 2009.
- Upgrading of Sembawang Shopping Centre will yield another 4,200sqm.



Upgraded Sembawang Shopping Centre

Khoo Teck Puat Hospital



A Regional Hospital

The new Khoo Teck Puat hospital, to be completed in 2010, will be located conveniently near Yishun MRT station, with tranquil views of the neighbouring Yishun Pond.



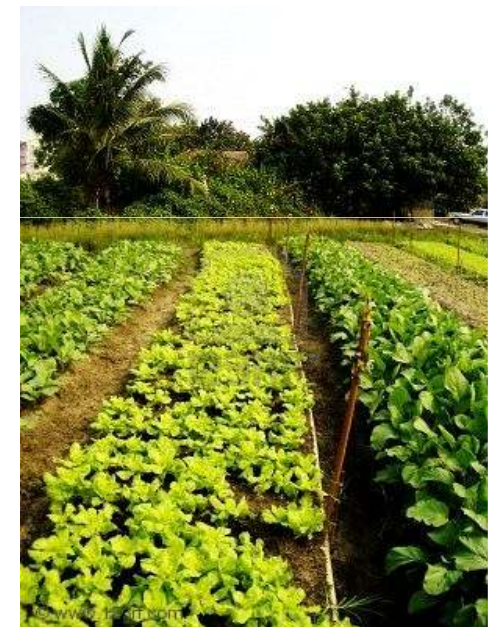
Communal Areas



Book lovers will welcome a new community library for Yishun. To be ready by 2009, the sprawling facility will occupy 2,300sqm in the Northpoint Shopping Centre extension.



A scheme is in place to encourage interim recreational and community facilities on sites that are not yet due for development. It has resulted in the construction of many hard courts throughout the HDB towns for sporting activities and grassroots functions. **Temporary football fields, vegetable farms, and bird-pole areas** are also welcome uses.



Thank you.

.